

GLADETINO

Low-Profile LED Area Luminaire




DECO[®] | LIGHTING



SLADDETINO

CONTENTS

3	WHO WE ARE	
	Commitment to Quality	5

33	OPTICS	
	Applications	35
	Application Layouts	37
	Isocurves	47
	Controls	51

7	WARRANTY	
	Finishing Process	9
	Power Supply	11
	Nichia Partnership	13

53	ACCESSORIES	
	Color Finish	53
	Line Drawings	55

15	OVERVIEW	
	Anatomy	17

57	ORDERING INFORMATION	
----	----------------------	--

19	MOUNTING OPTIONS	
	Pole Mount	19
	Round Pole Mount Adapter	21
	Pole Mounting Arm Adapter	23
	Yoke Mount	25
	Large Yoke Mount	27
	Slip Fitter	29
	Wall Bracket	31

WHO WE ARE

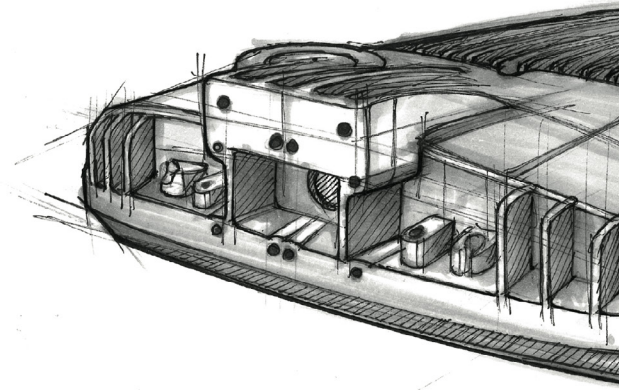
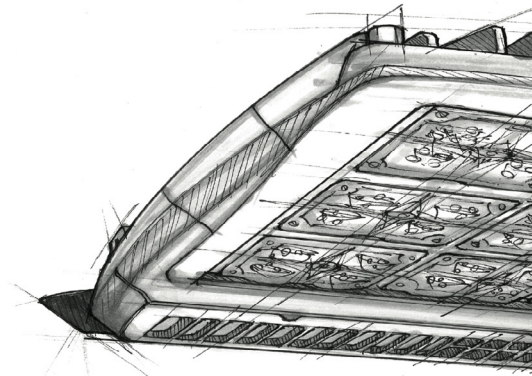


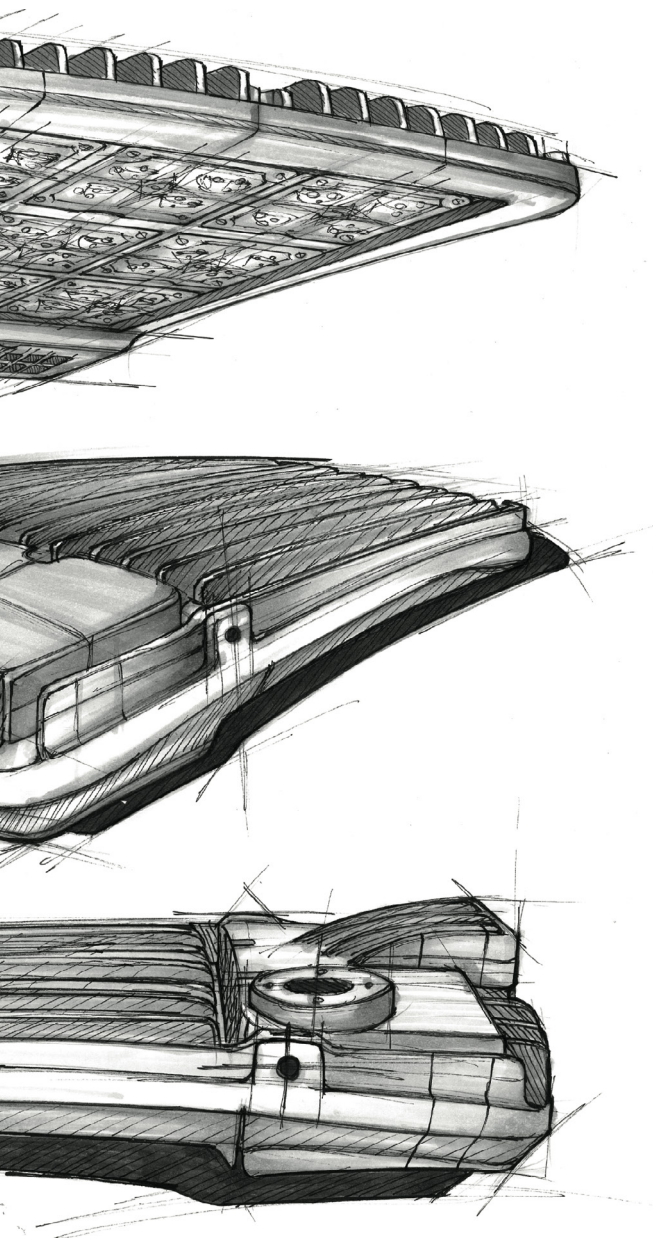
DECO[®] | **LIGHTING**

DECO Lighting specializes in the manufacturing of innovative, next-generation LED lighting solutions that enhance the environment through reduced energy consumption, improved lighting quality, and higher efficiency. Parent company Deco Enterprises has over 50 years of combined experience in lighting manufacturing and has produced many innovative products that have shaped our industry today.

Our mission is to be the leading provider of cutting-edge, environmentally - friendly, high quality fixtures as well as related products to the U.S. and worldwide commercial institutional and utility markets. As a recognized leader in the lighting industry, it is our responsibility to deliver superior value to our customers and their clients on a consistent basis. This commitment shapes everything we do, driving us to continuously develop and improve our products and the process necessary to fulfill today's needs for quality, energy-efficient, eco-friendly lighting solutions.

At DECO Lighting we understand that everyone has a special set of skills; we all have something that we are good at, which makes us a unique breed of lighting





manufacturer. We value the skills and distinctive character of each individual, which is why each member represents a superhero that is characteristic of him or her. We believe that if we give ourselves the chance to discover and develop our own special skills, we can enrich our lives and the lives of others. When our passionate, forward-thinking team of superheroes comes together, we effectively work to create a service-driven organization. Our dedication and positive spirit make us easy to do business with and allows us to continue to innovate and improve our products.

Developments and Industry Recognition:

- Introduced Select-A-Watt adjustable drivers with a temperature rating of 95°C.
- Named as one of the Top 100 fastest growing companies in Los Angeles in 2016 by the LA Business Journal.
- Chosen as Technology Partner for the Los Angeles Better Buildings Challenge, a U.S. Department of Energy initiative to support property owners and managers in having cost-effective building performance upgrades and improvements.

Digitize your light.®

QUALITY

Our Commitment to Quality.

At DECO Lighting we are committed to providing a quality luminaire from top to bottom. Our QC process begins at the component level and is predicated on building a product that will far outlast our warranty. Because of the way we build our fixtures, we enjoy a failure rate of less than one-half percent on all of our LED products, which is why we can afford to provide the industry's best warranty – 10 years including labor. No other lighting manufacturer in the world can beat our warranty. DECO Lighting is a “Made in the U.S.A.” company with our corporate offices located in the greater Los Angeles area. We service contracts with military, government and municipal entities in the U.S. and around the world.

DECO Lighting's drivers are built to last. We've taken components typically used in the electronics industry and incorporated them for use in lighting, which means they are over-engineered to ensure maximum efficiency and life-expectancy. Our drivers are rated to 95°C, which, when combined with the way we under-drive our Nichia LEDs to reduce heat, allows us to supply fixtures for jobs in Saudi Arabia and Dubai. We don't shy away from hot environments.

We only use top quality materials in the manufacture of our castings, including A360 aluminum ingot imported from Australia. Our fixtures contain more metal than the competition, which makes them sturdier and ensures that they operate at a lower temperature than thinner fixtures. This is critical in preventing capacitor failures that occur when internal temperatures reach or exceed 90°C.





10 YEAR WARRANTY

Deco Lighting's industry-leading 10-year, 100,000-hour warranty evolved from our team's drive to design, engineer, and manufacture top-quality LED lighting systems in the United States. From the initial sourcing of resilient fixture materials and high-performance LED chipsets to the attention to detail we provide during assembly and packaging, this complete start-to-finish assurance process is what gives us the confidence to back all of our LED luminaires with this unbeatable warranty.

Lumen Maintenance

The extended lifetime delivered by under-driving the industry's finest LEDs offers several benefits over the traditional HID systems, from eliminating the cost of bulb replacement to the advantage of using a product that depreciates less than 7% over the course of 10 years – which enables DECO to cover lumen depreciation under our already extensive warranty.



Durable Fixtures

Gladetino fixture housings are built using pure A360 non-recycled aluminum ingot and precision-designed optical lenses formed from silicone. Staggered heat fins located on the top of Gladetino fixtures create a massive surface area for efficient thermal dissipation.



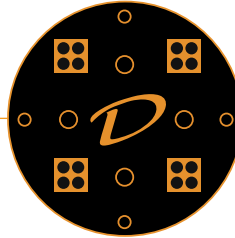
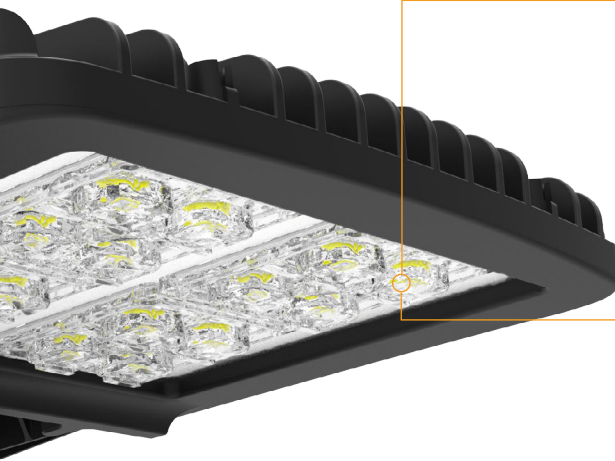
Labor Included

In addition to covering the entire fixture, including the LED driver, our warranty includes a labor allowance should any issue arise within the warranty period that requires labor to be performed during the correction or replacement process.



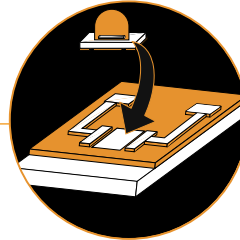
WARRANTY

INCLUDES LABOR ALLOWANCE



LED

State-of-the-art Nichia LED chipsets deliver unparalleled lighting performance and give the Gladetino an L80 rating of 196,000 hours. This translates to an operational lifetime of over 20 years if operated at a full 24 hours per day!



Cooltech

By under-driving our LEDs we reduce fixture temperature and extend LED life considerably. In addition, our patented Cooltech boards lead to a faster heat transfer rate and lowers heat buildup (up to a 20° C reduction) compared to the traditional LED board systems used by our competitors.



Driver

The WattControls LED driver system yields superior performance compared to other third-party driver systems, rated to operate in a temperature range of -40°C to +95°C and delivering a power factor of 0.95 or greater along with low harmonic distortion.

These six key elements, combined with our dedication to constantly innovate and develop next-generation lighting solutions, come together to deliver a winning formula when selecting Deco Lighting products. In essence, we put our money where our mouth is and provide our clients the confidence to specify our innovative lighting systems across a variety of applications.

FINISHING PROCESS

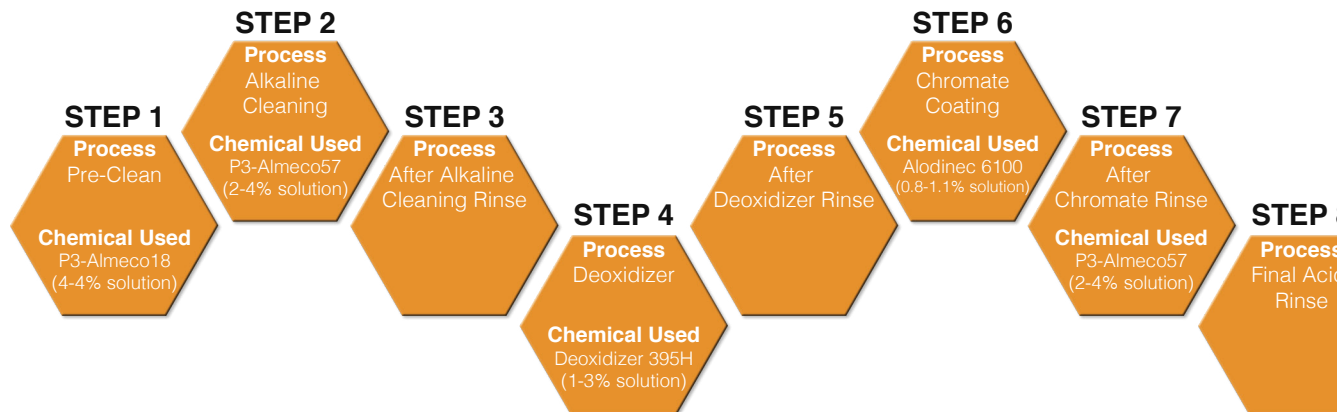
Chromate Conversion Protection

GLADETINO LED FIXTURES FEATURE A CHROMATE CONVERSION COATING FOR ENHANCED DURABILITY.

Chromate conversion is a chemical treatment process for aluminum that provides protection from corrosion and enhances the ability of paint to bond well with the aluminum. During this ten-stage coating process, the surface of the aluminum reacts with the coating treatments and becomes an integrated part of the coating. The coating consists of a thin surface film which becomes more resistant to abrasion as it dries and cures. This leads to a superior fixture finish, which in turn protects the LED luminaire further against overall wear from the environment.

Benefits of Chromate Conversion

- Increased resistance to corrosion and abrasion
- Creates an excellent bonding surface for powder coat finish
- Extended lifetime for fixture finish and LED luminaire





POWER SUPPLY

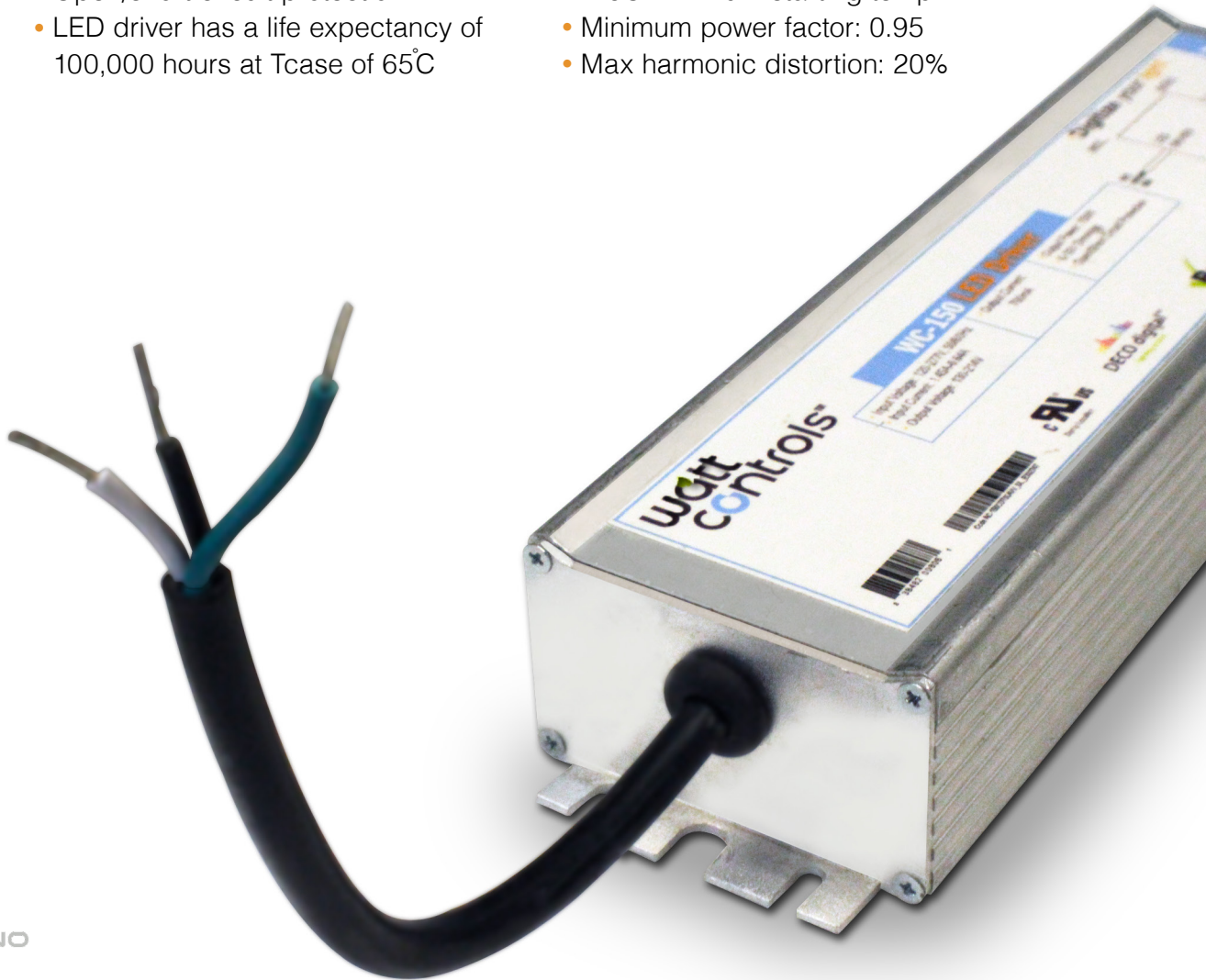
Watt Controls LED Driver System

DECO Lighting maintains the belief that superior components yield superior performance, using nothing but the most robust LED drivers on the market to deliver sharp, crisp LED lighting. The Gladetino LED luminaire utilizes the American-made Watt Controls LED drivers that feature extended lifetimes as well as top-quality Japanese electronic components. DECO's Watt Controls LED driver power supply units are designed to under-drive the Gladetino's LED board system, further extending overall fixture lifetime and enabling the LED driver to also be covered under DECO's industry-leading, 10-year warranty.

Watt Controls drivers are potted in silicone for electrical insulation, thermal management, and resistance to water intrusion; quality extruded aluminum housings provide further resistance to water intrusion. DECO LED drivers are available in nearly every input voltage, from 120-277, 347, and 480VAC. The elimination of an external step-down transformer leads to minimal THD and driver efficiency of over 90%. Gladetino drivers are capable of 0-10V dimming, making them ideal for use alongside 7-Pin (Dimming) Photocells, as well as Motion Sensors, Digital Wireless Control Systems, and other Title 24-compliant applications. DECO drivers feature integrated Surge Protection up to 10kV line-to-ground for all input voltages.

Safety & Performance

- Class A sound rating
- Open/short circuit protection
- LED driver has a life expectancy of 100,000 hours at Tcase of 65°C
- 95°C temperature rating
- -40°C minimum starting temp.
- Minimum power factor: 0.95
- Max harmonic distortion: 20%





A PARTNERSHIP LIKE NO OTHER

DECO Lighting has made a commitment to quality manufacturing by forming a strategic partnership with Nichia, makers of the finest-quality LEDs in the market. DECO Lighting engineers have teamed with Nichia engineers to manufacture an LED light engine that produces very little heat, lasting up to 219,000 hours!

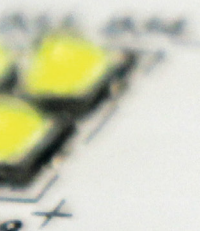
Nichia, arguably the top LED manufacturer in the world, remains at the leading edge of energy-efficient LED technology, producing LEDs with extended life cycles and minimal lumen depreciation. At DECO, we select only the highest quality components to use in our lighting fixtures, and our partnership with Nichia guarantees a future of continuous innovation for DECO Digital LED products. The use of Nichia LEDs in our fixtures has enabled us to provide the industry's first and only 10-year, 100,000-hour warranty on all of our LED products, which includes an allowance for labor.

The close relationship shared between our two companies allows for a streamlined process that enables DECO Lighting to introduce new products into the market immediately, as opposed to the standard 8-10 months it takes for traditional new product sales cycles. With a common commitment to improving the quality and efficiency of lighting in an effort to secure a sustainable future for everyone, DECO Lighting and Nichia have the potential to revolutionize the lighting industry.

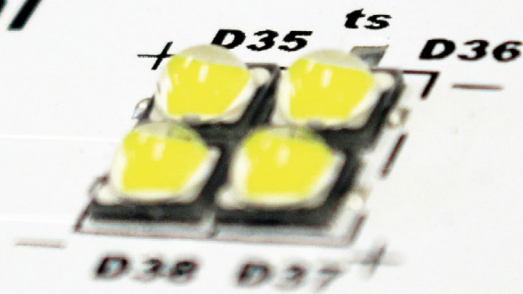
DECO Digital LED products stand out from traditional lighting technologies and even competing LED systems, featuring minimal lumen depreciation due to top-quality Nichia LEDs and well-engineered board designs that allow for efficient heat dissipation.



digital
DECO digital®
lighting systems



57 6500K



COOLTECH™
E348315 SP-A R0HS
94V-0

OVERVIEW

Ultra Low-Profile Design.

CUTTING-EDGE PERFORMANCE.

DECO Lighting's Gladetino is a revolutionary low-profile LED area light fixture designed to illuminate a variety of outdoor lighting applications such as; auto dealerships, parking lots, roadways and educational facilities. Engineered to have precision-controlled light distribution and a high efficacy lumen output, the Gladetino is available in three different form factors with a range of lumen packages as well as an optional 95 CRI for incredible color rendering. Next-generation performance is accompanied by a wide array of optic types and mounting brackets, thus making the Gladetino a versatile luminaire in the energy-saving outdoor lighting space. Additional options including motion sensing, photo sensing and wireless control, paired with an operating temperature of -30° to +55°C, make it the ideal lighting solution for nearly any exterior application.



D826-LP



D824-LP



D819-LP

ANATOMY OF A

Twist-Lock Photocell

Shorting cap comes standard with fixture, but customers can opt for the optional NEMA 3-pin twist lock photocell for superior energy saving.

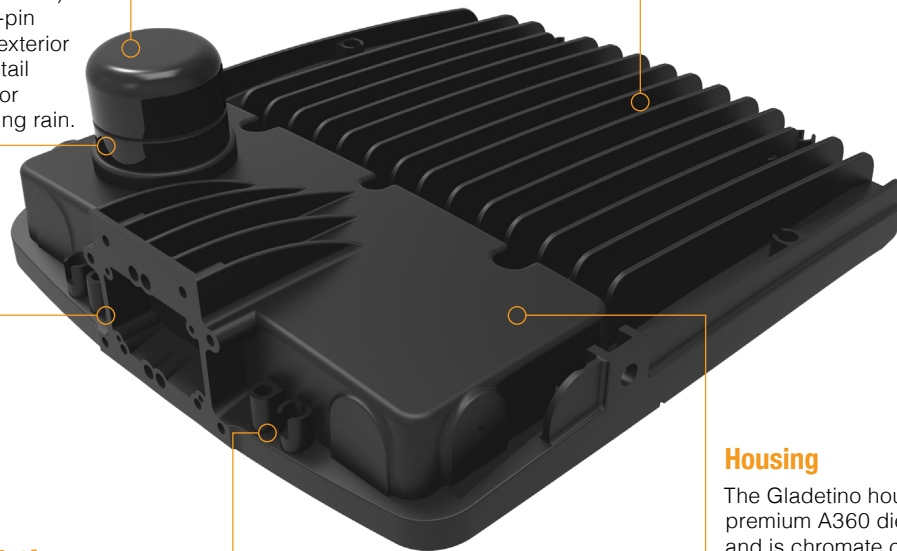
For even more precise control, the optional 7-pin receptacle allows for the use of a 7-pin (Dimming) photocell, or the use of various control systems.

Integrated Heat Sink Fins

Optimally spaced heat sink fins provide superior heat dissipation.

Photocell Receptacle

Integrated NEMA 3-pin (7-pin optional) for NEMA twist-lock photocell, 7-pin receptacle can accept wireless exterior controls. Mounted to a raised detail in the housing casting for superior resistance to water intrusion during rain.



Mounting System Platform

Various threaded holes integrated into the casting allowing for the attachment of the different mounting arms, without the need for an adapter.

Captive Machine Screw

Allow for easy field servicing removing the fear of losing crucial fasteners.

Housing

The Gladetino housing is made of premium A360 die-cast aluminum, and is chromate conversion coated before the powder coating process for superior resistance to corrosion.

CNC-laid closed cell silicone gaskets provide high-precision placement, creating optimal water resistance.

*Gladetino is compatible with any control system using a NEMA 7-Pin style receptacle

FIXTURE



High-Performance LEDs

Top-quality Nichia 219C chipsets lasting up to 219,000 hours.

Driver Compartment Door

LED Board/Optic Array

Superior component selection leads to optimal efficiency. Deco uses premium Nichia High-Performance LEDs and precision-designed, injection molded PMMA optics for uniform light distribution and razor-sharp control of rich LED Light.



Motion Sensor

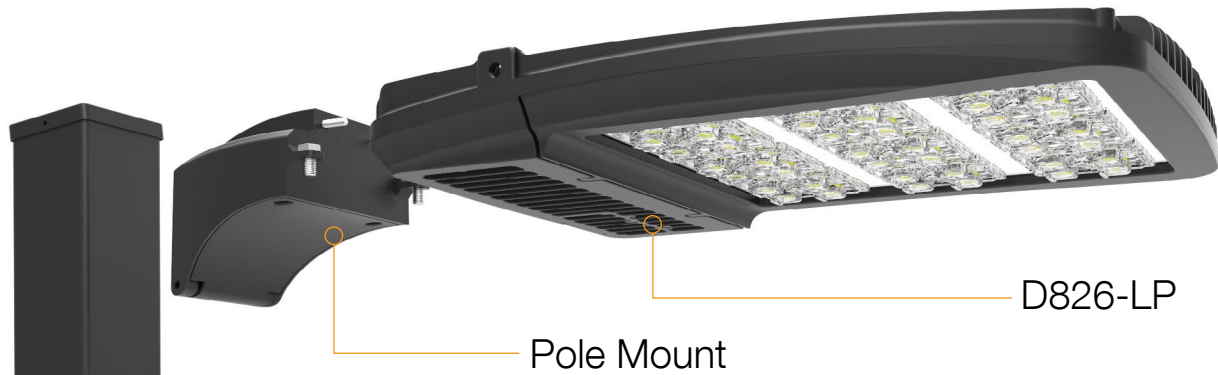
Optional Motion Sensor allows for superior power savings. Motion Sensor is housed in a die-cast, chromate conversion coated, and powder coated box for resistance to corrosion and water intrusion.

Glare Shield / House Side Shield

The optional Gladetino light shield mounts towards the front or rear of the LED plate to provide glare or house side shielding functionality, respectively. The shield consists of 1.5mm thick steel, chromate conversion coated to reduce corrosion and powder coated to match the color of the housing. *Illustration here depicts the shield in a house side shield orientation



POLE MOUNT



5.8" x 4.3" x 5.3"

H W D

D819-LP



5.8" x 4.3" x 5.3"

H W D

D824-LP



6.0" x 3.8" x 5.6"

H W D

D826-LP

PM

A die-cast aluminum mounting arm with an integrated die-cast aluminum door on the under side. Both elements are chromate conversion coated as well as powder coated for superior resistance to environmental wear and to seamlessly match the fixture finish for a uniform aesthetic. The standard pole mount is designed for a square pole in order to provide a sturdy and secure platform to mount the low-profile luminaire in pole applications.

Universal mounting bracket coming Q2 2017



ROUND POLE MOUNT ADAP



D819-LP

5.8" x 5.4" x 5.3"
H W D



D824-LP

5.8" x 5.4" x 5.3"
H W D



D826-LP

6.0" x 3.8" x 6.6"
H W D

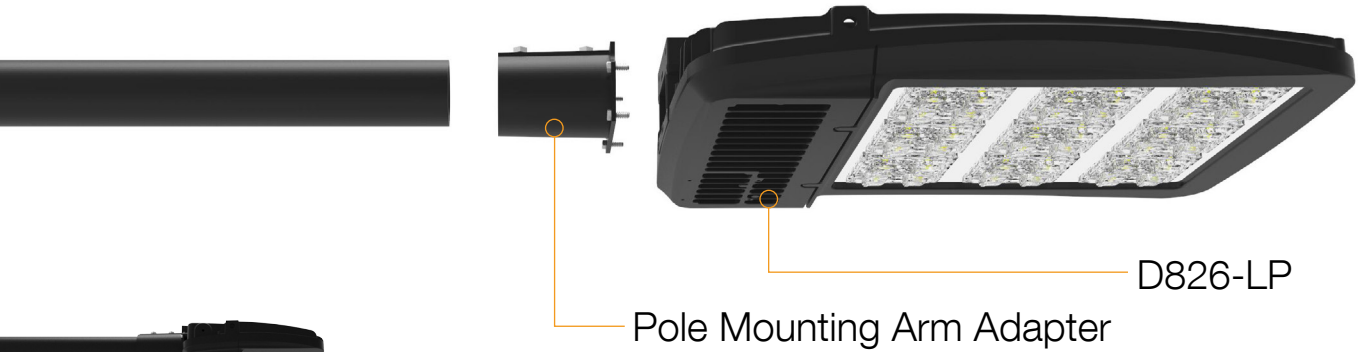
TER

RPMA

The convenient round pole adapter is designed to sit between the standard pole mount and a 3-4" diameter round pole. The RPMA mounting bracket is chromate conversion coated as well as powder coated for exceptional corrosion resistance and to blend seamlessly with the paint finish of the luminaire.



POLE MOUNTING ARM ADAPTER



D826-LP

Pole Mounting Arm Adapter

D819-LP

3.7" x 3.9" x 4.1"

H W D



D824-LP

3.7" x 3.9" x 4.1"

H W D



D826-LP

3.7" x 3.9" x 4.1"

H W D



ING ER

PMA

Similar to the slip fitter, the PMA/mast arm is a quality die-cast aluminum component, featuring a chromate conversion coating for remarkable durability and powder coated paint finish to match the low-profile luminaire. The mast arm mounting bracket is designed for a 2-3/8" diameter round pole. However – unlike the slip fitter – the mast arm adapter is fixed at a 0° angle, making it ideal for street lighting applications.



YOKE MOUNT



D819-LP

2.5" x 5.3" x 5.7"
H W D



D824-LP

2.5" x 5.3" x 5.7"
H W D



D826-LP

2.5" x 5.3" x 5.7"
H W D



Feature robust die-cast aluminum components along with a chromate conversion coating to deliver a premium mounting solution in applications where tilting the luminaire is required. Both the standard and large yoke mount brackets are factory-installed, with an IP68-rated liquid tight cable gripper and a foot length of black 3-wire SJOW cable accompanying the fixture housing when these brackets are specified.



LARGE YOKE MOUNT



D819-LP

1.8" x 15.2" x 8.5"
H W D



D824-LP

1.8" x 15.2" x 8.5"
H W D



D826-LP

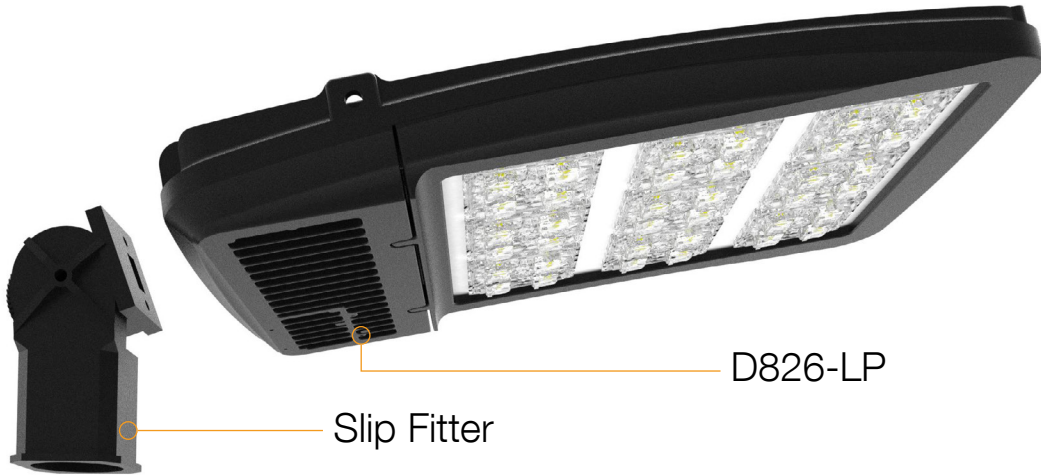
2.0" x 15.9" x 10.4"
H W D

LYM

Feature robust die-cast aluminum components along with a chromate conversion coating to deliver a premium mounting solution in applications where tilting the luminaire is required. Both the standard and large yoke mount brackets are factory-installed, with an IP68-rated liquid tight cable gripper and a foot length of black 3-wire SJOW cable accompanying the fixture housing when these brackets are specified.



SLIP FITTER



D826-LP

Slip Fitter



D819-LP

2.8" x 3.5" x 6.6"
H W D



D824-LP

2.8" x 3.5" x 6.6"
H W D



D826-LP

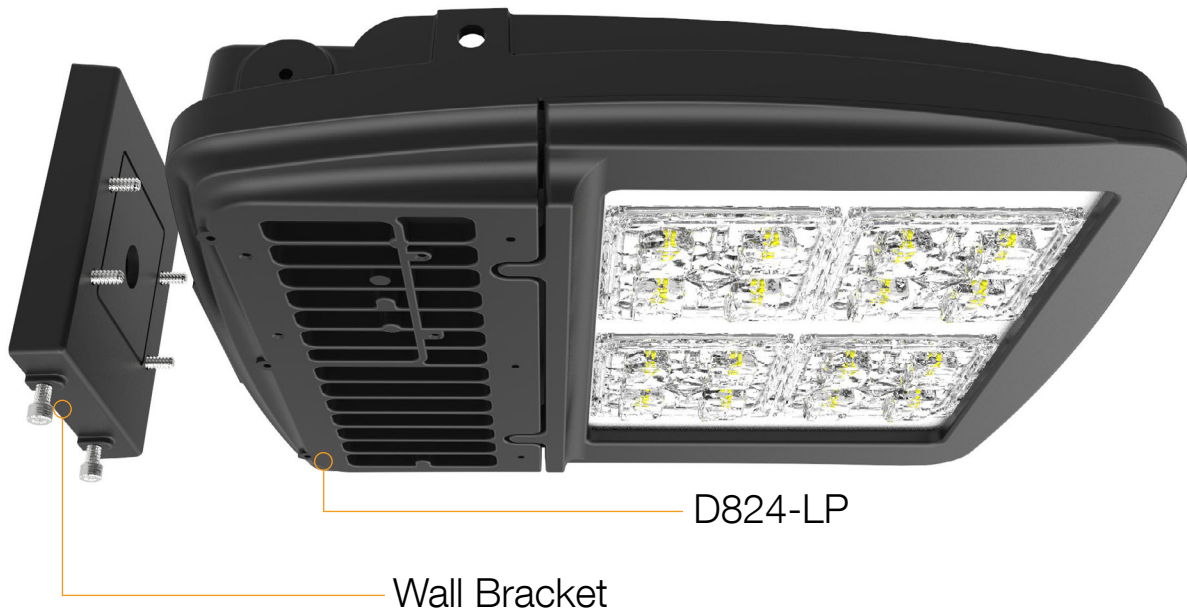
2.8" x 3.5" x 6.6"
H W D

SF

Incorporates all die-cast, top-quality aluminum components and is designed to accommodate a 2-3/8" diameter round pole. The slip fitter can rotate from +90° to -90°, making it ideal for flood lighting, sign lighting, and indirect lighting applications. All items in the mounting bracket are chromate conversion coated and powder coated for superior durability and aesthetics.



WALL BRACK



D819-LP

5.6" x 4.9" x 0.8"
H W D



D824-LP

5.6" x 4.9" x 0.8"
H W D



D826-LP

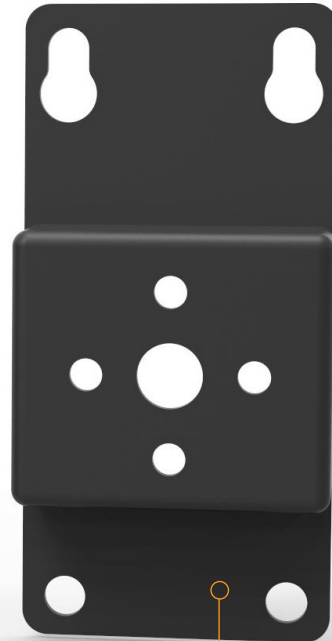
7.9" x 3.8" x 1.6"
H W D

WJB

Consists of a two-part design utilizing a pressed sheet metal junction box bracket along with integrated gasket and bubble level. The second element of the mounting bracket is a die-cast aluminum shroud finished with a chromate conversion coat as well as powder coat for superior corrosion resistance and durability. The die-cast shroud is powder coated to match the luminaire housing, creating a seamless mounting solution for 4" square or 4" octagon junction boxes.



D824-LP & D819-LP



D826-LP

OPTICS

Optics are a fundamental component of LED lighting systems, and the optical performance of an LED system determines the overall quality and performance. Our advanced optical designs make DECO luminaires the perfect solution for any lighting application. Indexed to the circuit board to ensure consistent optical alignment, our optics deliver repeatable photometric performance, and their precision-molded acrylic lenses provide optimal luminaire spacing and improved uniformity.

Our main focus for producing clean-energy products is shown through our optical systems, which are Dark Sky compliant, controlling light above 90° and eliminating wasteful up light. These optics will now be applied to several of our outdoor luminaires, such as the D812-LED architectural diamond luminaire, the D824-LED and the D826-LED premiere area lighting fixtures, as well as the D816-LED and the D823-LED shoebox-style area lights to provide excellent light distribution. Customers will have a choice of five optimized distributions; Type II, Type III, Type IV, Type IVA (front row) and Type V. By adding these optical systems to several of our outdoor products, it greatly expands our offerings, and with our high-performing Nichia LEDs and 10-Year Warranty with Labor, DECO will be the go-to place for all outdoor applications that require any specific lighting optics.





IN THE U.S.A.



P/N: 0229

APPLICATION

CAR DEALERSHIPS



FLOOD LIGHTING



HOSPITALS



ICE RINKS



SHOPPING MALLS



MILITARY





MUNICIPALITY



PARKING LOT



SCHOOLS



SIGN LIGHTING



TENNIS COURTS



UNIVERSITIES

APPLICATION

TENNIS COURTS

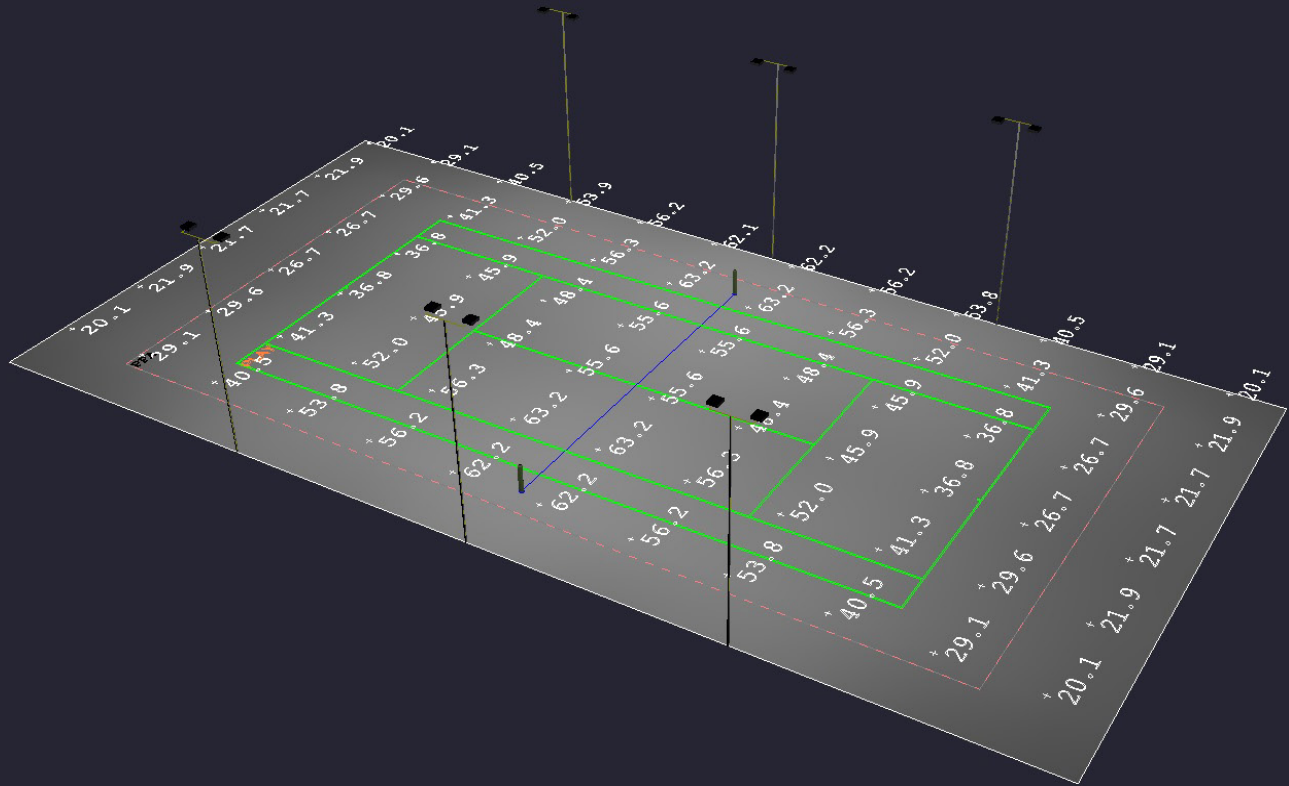


Expected Annual Savings: **\$4,605 - \$5,587**

Estimated Payback Period: **23 - 28 months**

Calculated for a 12-fixture tennis court replacing 1000W MH fixtures with 320W Gladetino LED luminaires to increase light levels at 24' mounting height. Estimated running time is 8 hours/night with savings calculated for worst-case, most-likely case, and best-case scenarios, which correspond to installation without controls, installation with a basic dimmer, and installation with full controls. Cost of electricity is set at 15 cents per kilowatt-hour. Annual savings includes estimated \$564 in annual maintenance savings associated with relamping and payback period estimate includes 15% utility rebate on initial fixture cost.

LAYOUT

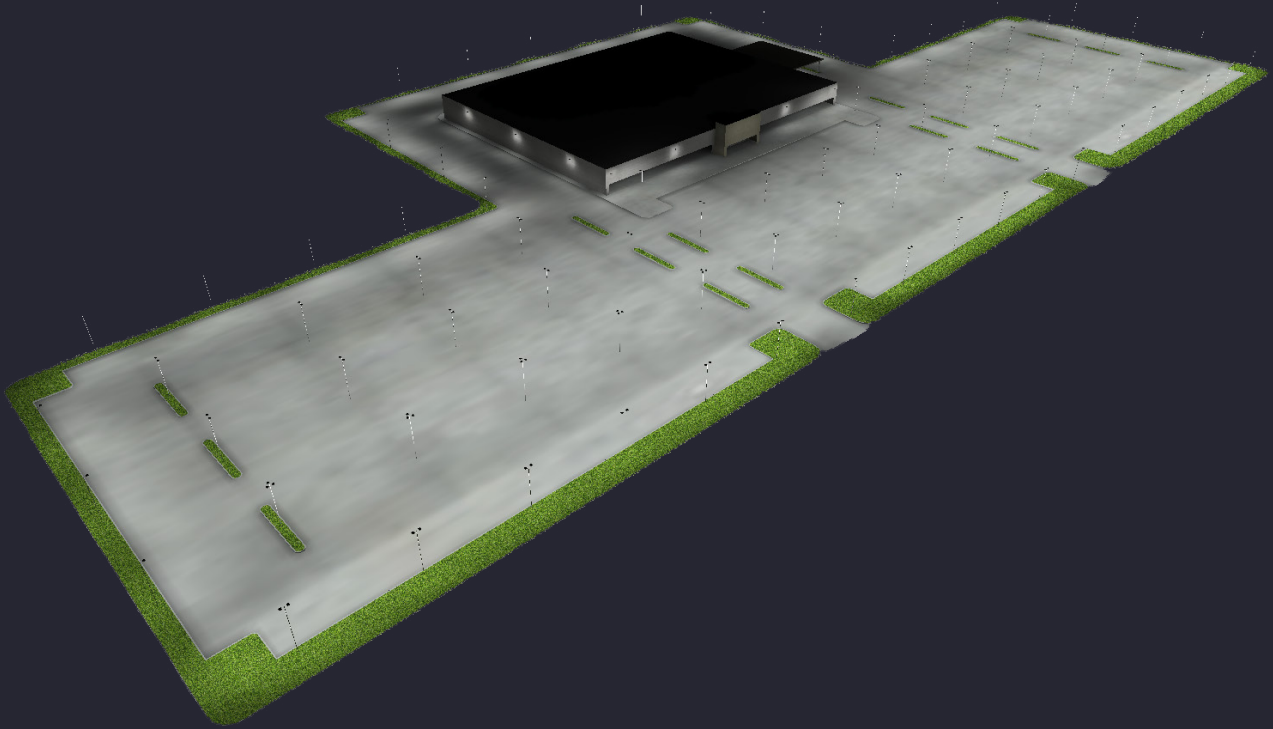


Calculation Summary

Label	Calc Type	Units	Avg	Max	Min	Avg/Min	Max/Min
Play	Illuminance	Fc	42.29	63.2	36.8	1.36	1.72
PPA	Illuminance	Fc	22.12	63.2	26.7	1.71	2.37

APPLICATION

AUTO DEALERSHIPS

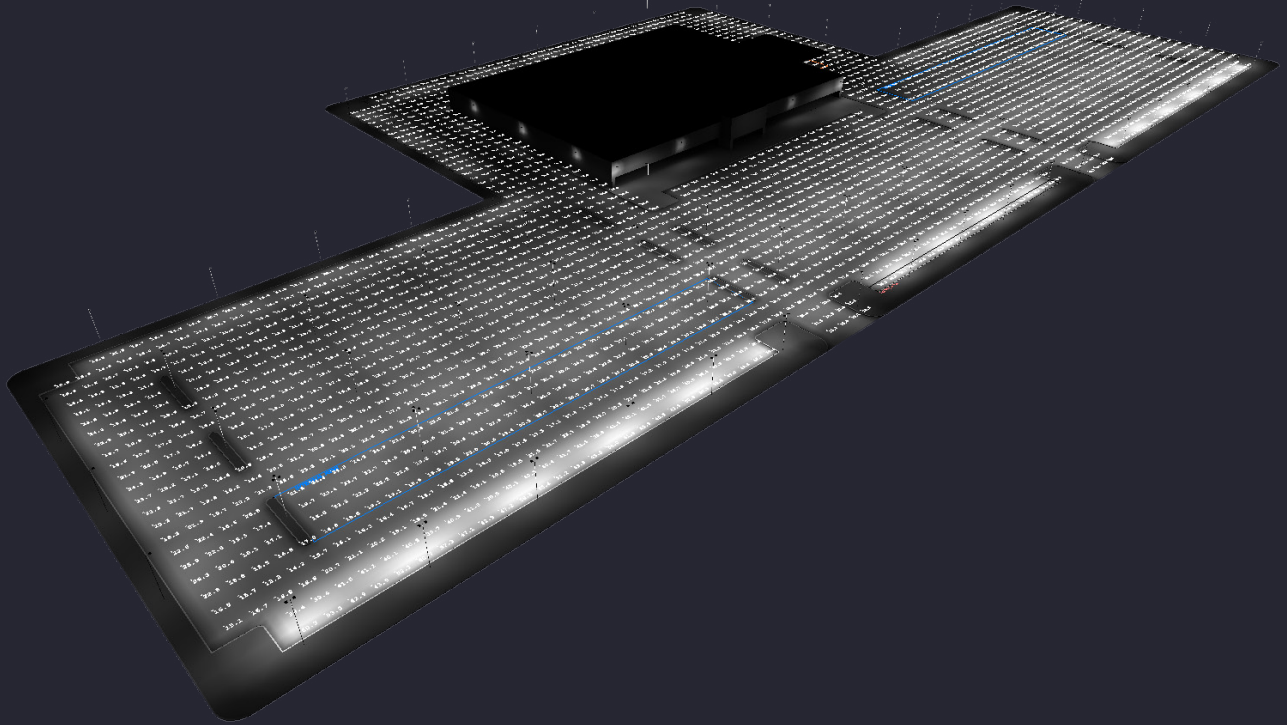


Expected Annual Savings: \$88,712 - \$108,196

Estimated Payback Period: 20 - 25 months

Calculated for a 170-fixture auto dealership replacing a variety of metal-halide fixtures with Gladetino LED luminaires at 25' mounting height. Estimated running time is 12 hours/night with savings calculated for worst-case, most-likely case, and best-case scenarios, which correspond to installation without controls, installation with a basic dimmer, and installation with full controls. Cost of electricity is set at 15 cents per kilowatt-hour. Annual savings includes estimated \$7,285 in annual maintenance savings associated with relamping and payback period estimate includes 15% utility rebate on initial fixture cost.

LAYOUT

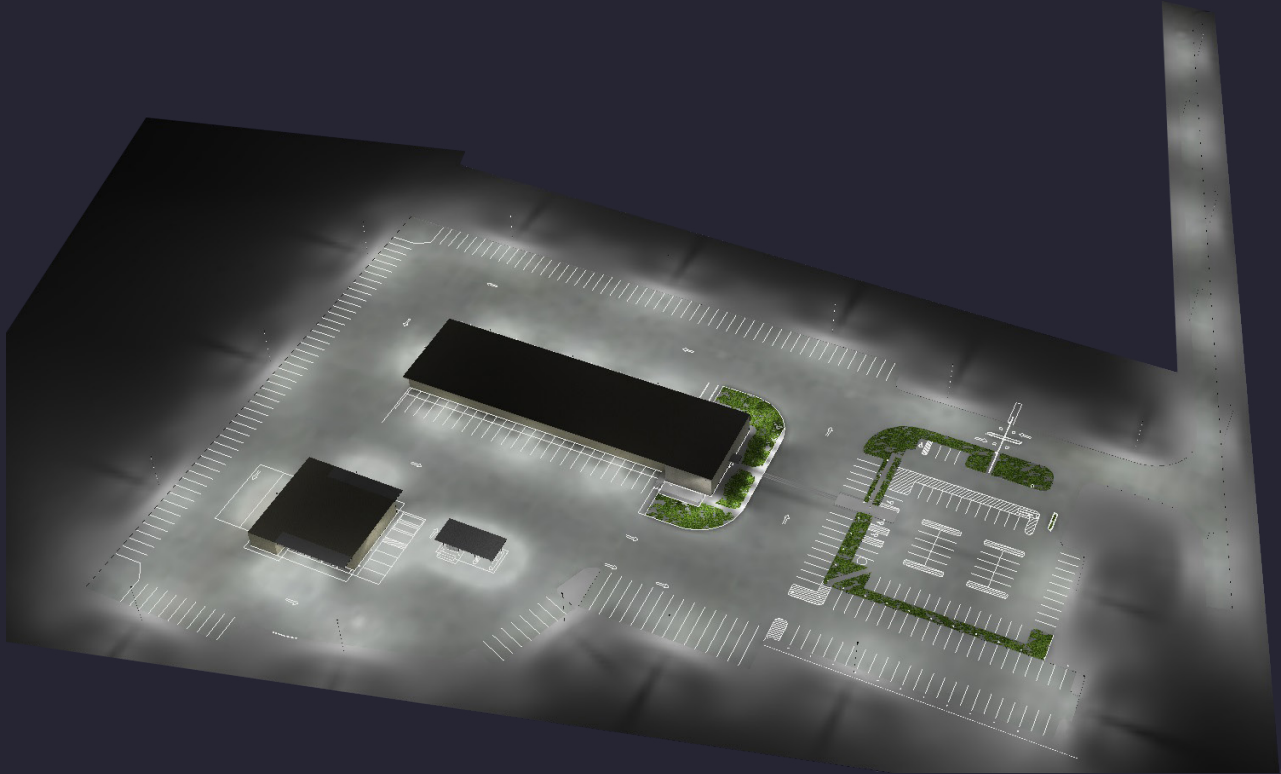


Calculation Summary

Label	Calc Type	Units	Avg	Max	Min	Avg/Min	Max/Min
Front Row	Illuminance	Fc	48.82	61.1	26.6	1.84	2.3
Internal Row	Illuminance	Fc	22.12	26.0	17.1	1.29	1.52

APPLICATION

HIGH MAST

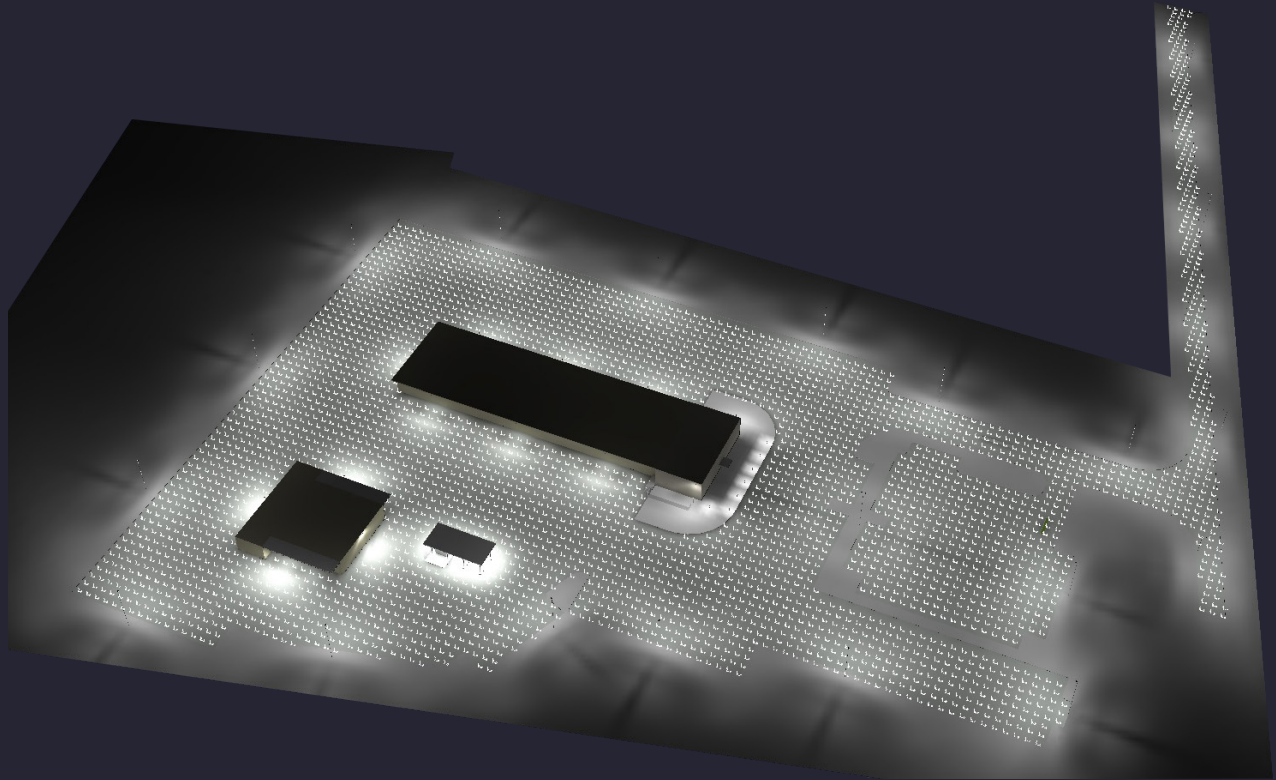


Expected Annual Savings: \$18,789 - \$22,831

Estimated Payback Period: 24 - 30 months

Calculated for a 45-fixture industrial location with high mast poles in use and a mounting heights of 50'. Estimated running time is 10 hours/night with savings calculated for worst-case, most-likely case, and best-case scenarios, which correspond to installation without controls, installation with a basic dimmer, and installation with full controls. Cost of electricity is set at 15 cents per kilowatt-hour. Annual savings includes estimated \$1,786 in annual maintenance savings associated with relamping and payback period estimate includes 15% utility rebate on initial fixture cost.

LAYOUT

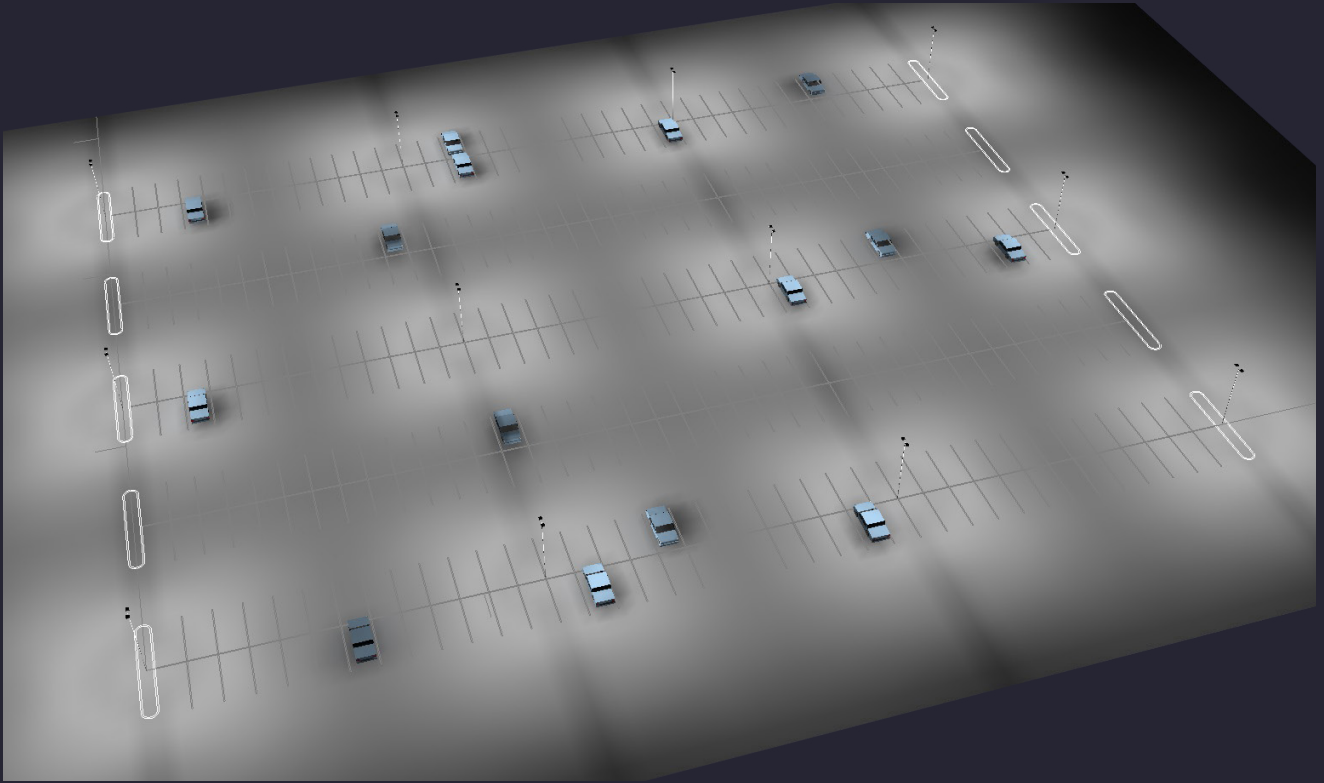


Calculation Summary

Label	Calc Type	Units	Avg	Max	Min	Avg/Min	Max/Min
Main	Illuminance	Fc	1.26	1.7	0.9	1.40	1.89
Perimeter	Illuminance	Fc	1.71	2.6	1.0	1.71	2.60

APPLICATION

PARKING LOT

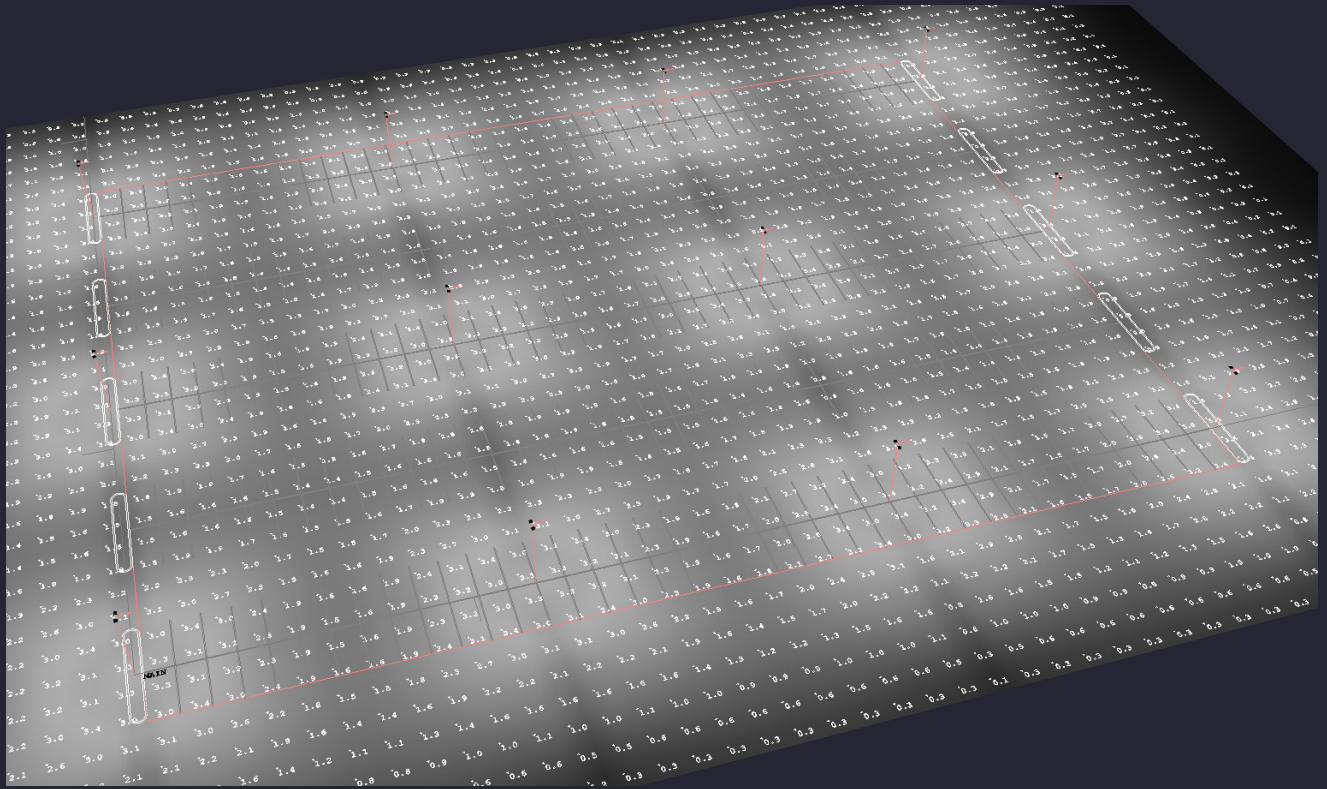


Expected Annual Savings: \$6,598 - \$7,669

Estimated Payback Period: 24 - 28 months

Calculated for a 24-fixture parking lot area replacing 400W metal-halide fixtures with 120W Gladetino LED luminaires at 35' mounting height. Estimated running time is 12 hours/night with savings calculated for worst-case, most-likely case, and best-case scenarios, which correspond to installation without controls, installation with a basic dimmer, and installation with full controls. Cost of electricity is set at 15 cents per kilowatt-hour. Annual savings includes estimated \$1,128 in annual maintenance savings associated with relamping and payback period estimate includes 15% utility rebate on initial fixture cost.

LAYOUT

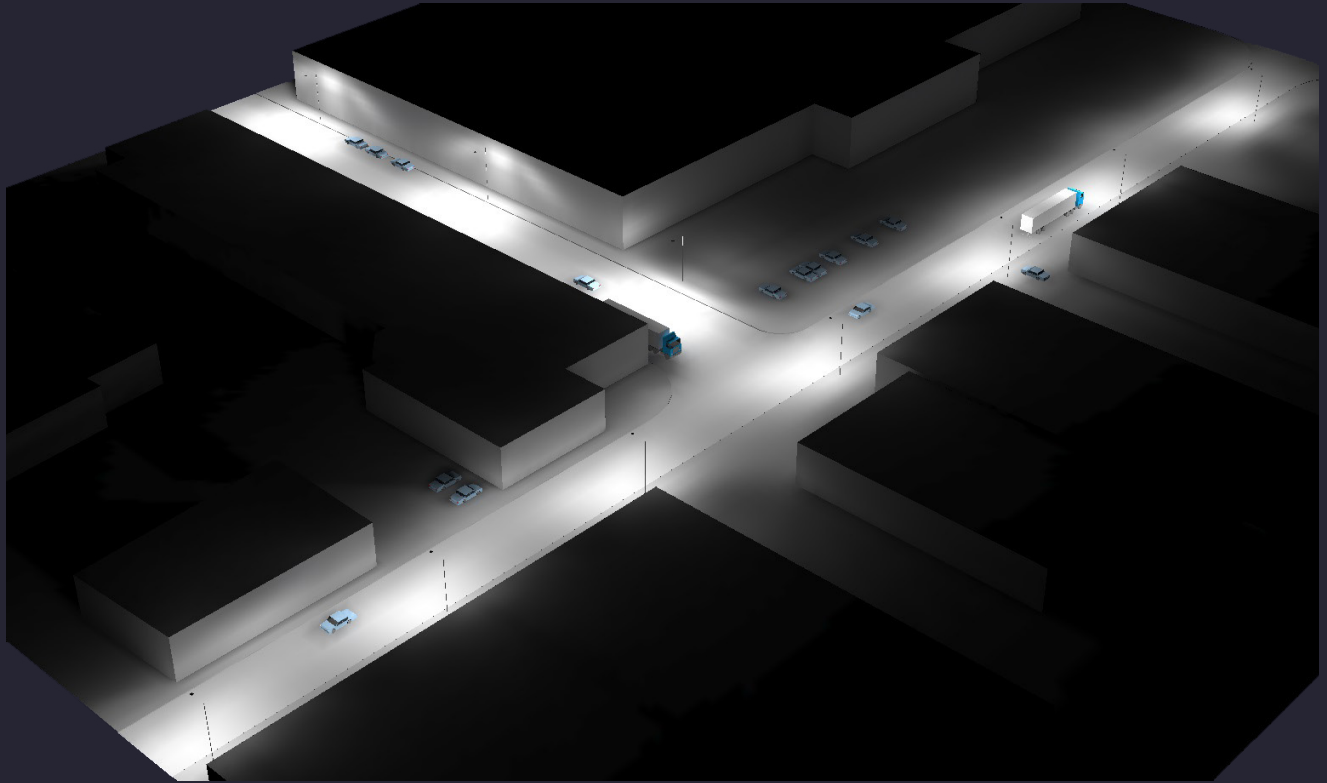


Calculation Summary

Label	Calc Type	Units	Avg	Max	Min	Avg/Min	Max/Min
Main	Illuminance	Fc	2.19	3.4	0.9	2.43	3.78

APPLICATION

STREET

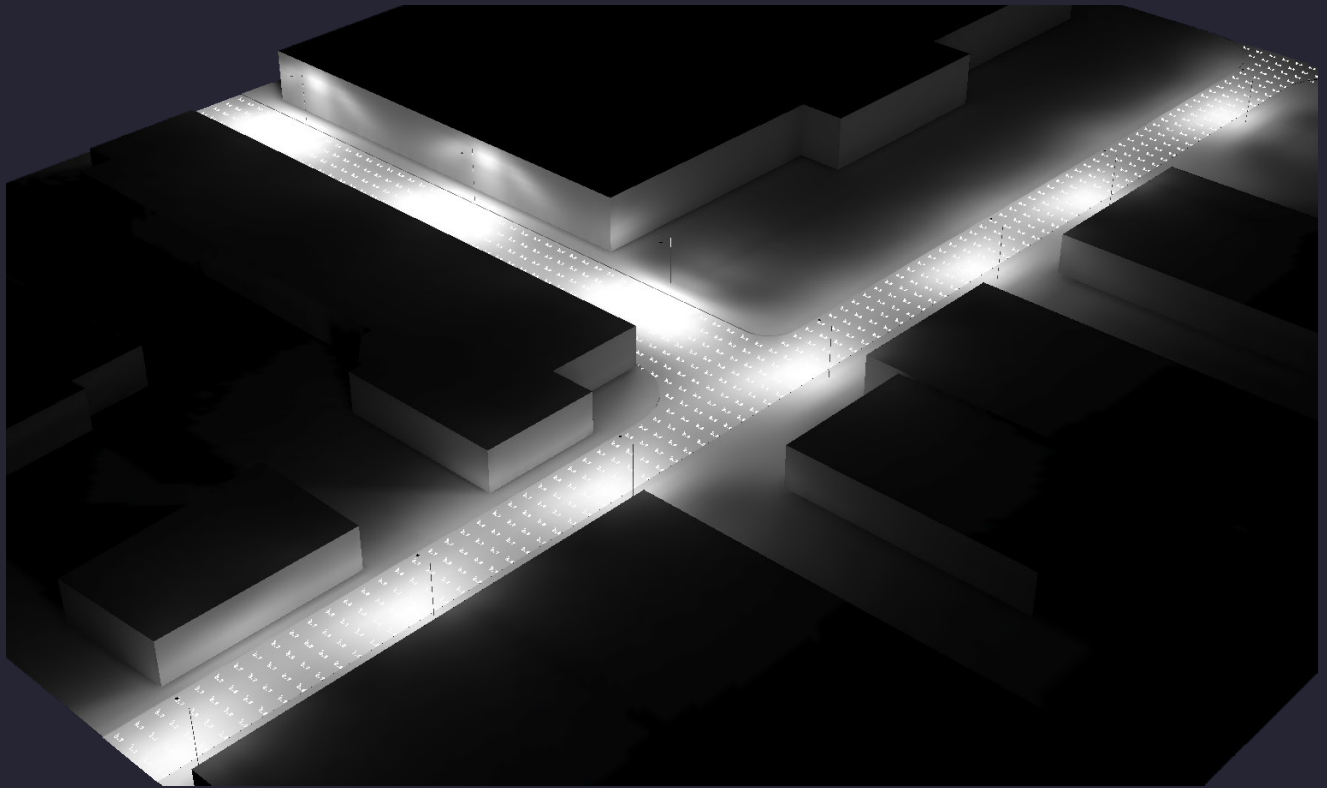


Expected Annual Savings: **\$2,139 - \$2,405**

Estimated Payback Period: **30 - 33 months**

Calculated for a small 10-fixture road section replacing 250W and 400W metal-halide fixtures with Gladetino LED luminaires at 35' mounting height. Estimated running time is 12 hours/night with savings calculated for worst-case, most-likely case, and best-case scenarios, which correspond to installation without controls, installation with a basic dimmer, and installation with full controls. Cost of electricity is set at 15 cents per kilowatt-hour. Annual savings includes estimated \$328 in annual maintenance savings associated with relamping and payback period estimate includes 15% utility rebate on initial fixture cost.

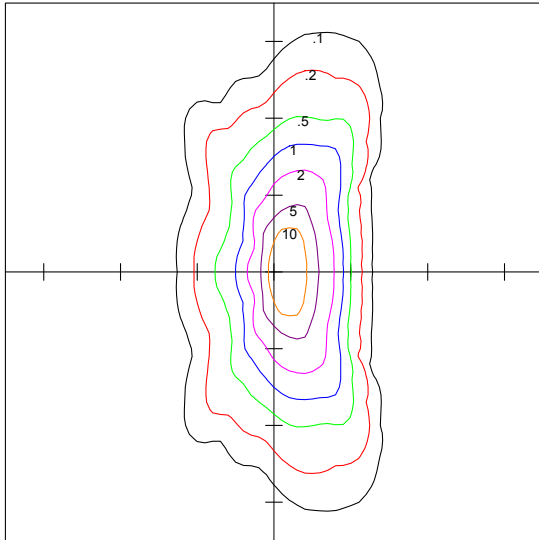
LAYOUT



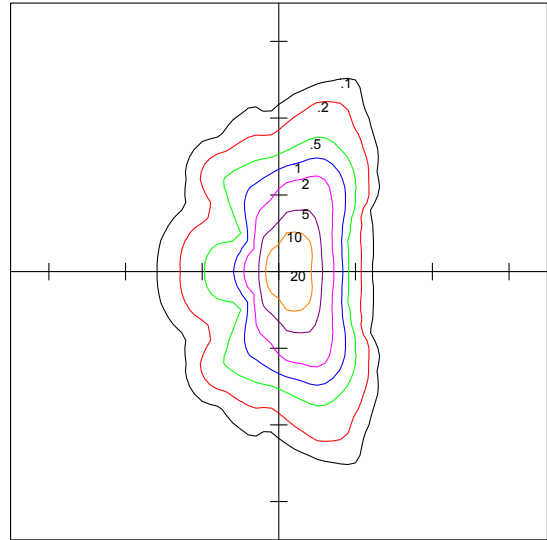
Calculation Summary

Label	Calc Type	Units	Avg	Max	Min	Avg/Min	Max/Min
Street 38	Illuminance	Fc	0.89	1.7	0.4	2.23	4.25
Street 65	Illuminance	Fc	1.12	2.8	0.3	3.73	9.33

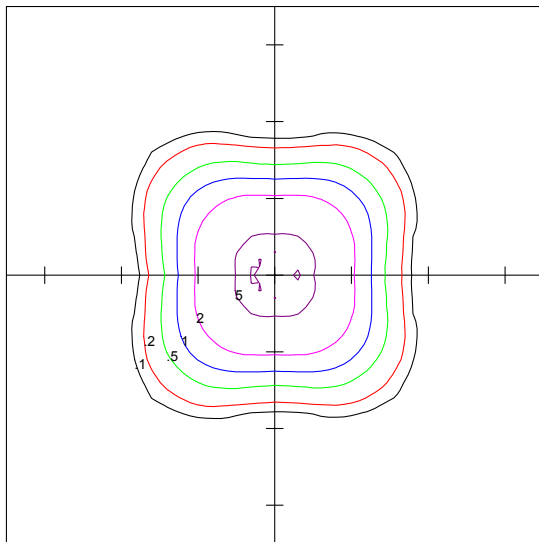
ISOCURVES



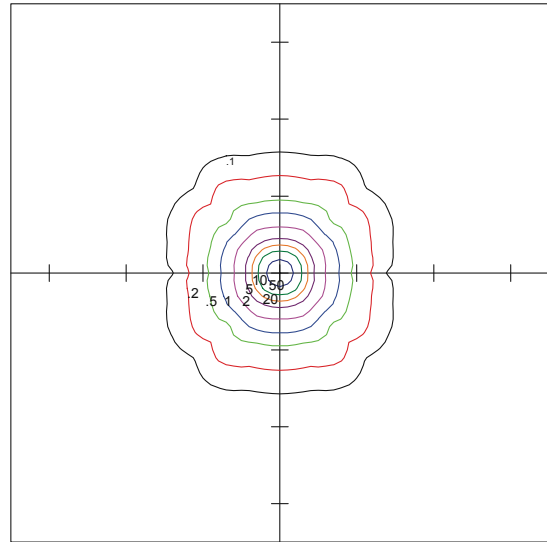
T2 Optics
Lumens: 19296
Maximum Calculated Value: 18.72 Fc



T3 Optics
Lumens: 17936
Maximum Calculated Value: 20.27 Fc

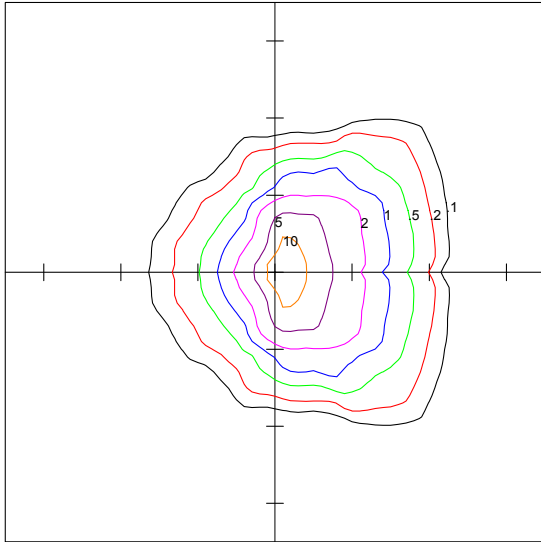


T5 Optics
Lumens: 18738
Maximum Calculated Value: 5.78 Fc



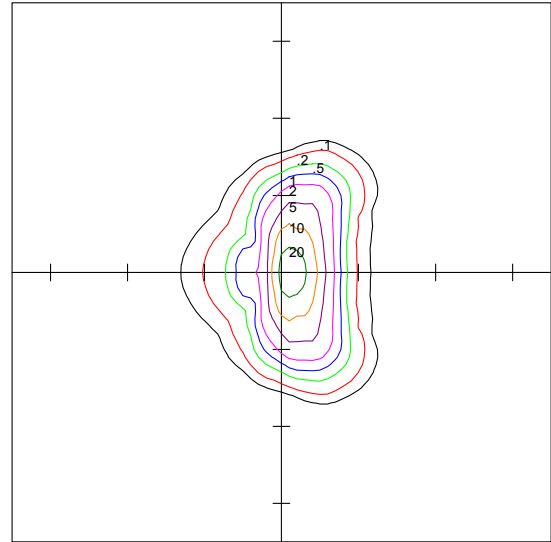
40° Optics
Lumens: 19340
Maximum Calculated Value: 101.85 Fc

D824 LED 150 W @ 15 FT



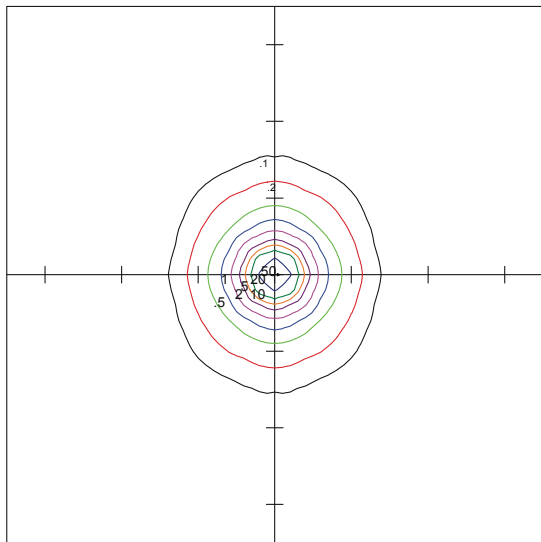
T4 Optics
Lumens: **19149**

Maximum Calculated
Value: **15.22 Fc**



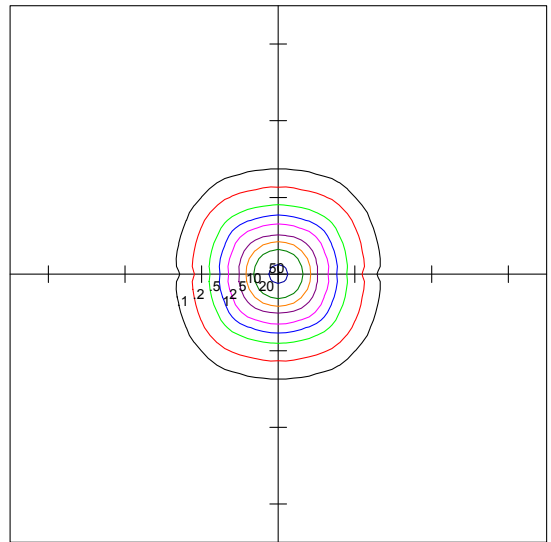
T4A Optics
Lumens: **17594**

Maximum Calculated
Value: **25.06 Fc**



55° Optics
Lumens: **19106**

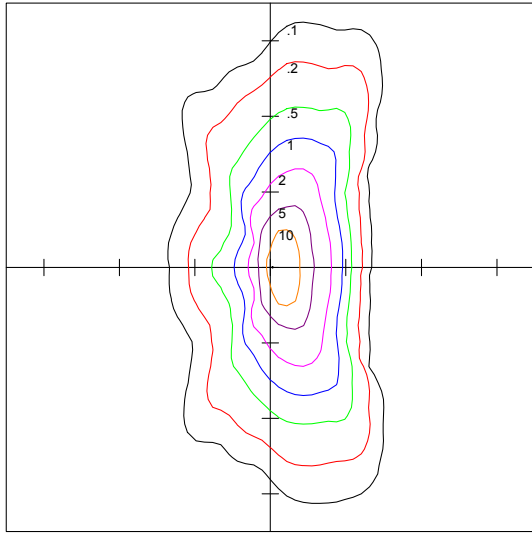
Maximum Calculated
Value: **97.32 Fc**



70° Optics
Lumens: **19419**

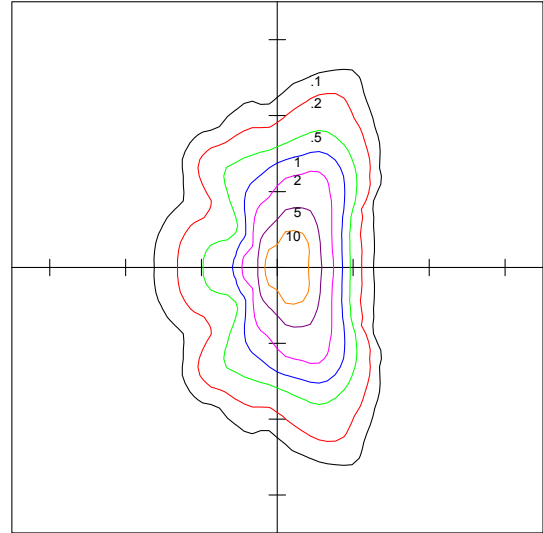
Maximum Calculated
Value: **59.26 Fc**

ISOCURVES



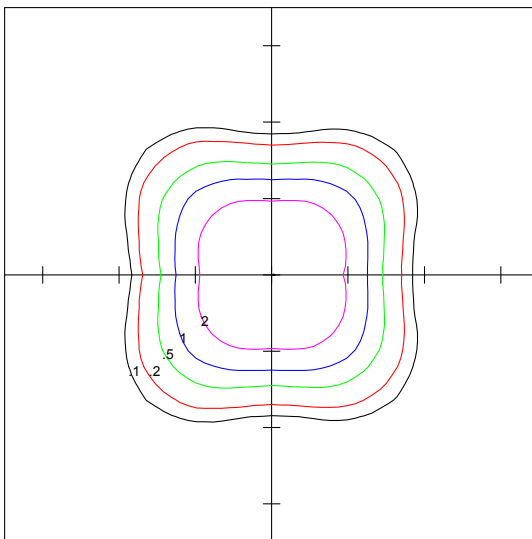
T2 Optics
Lumens: **40762**

Maximum Calculated
Value: **16.08 Fc**



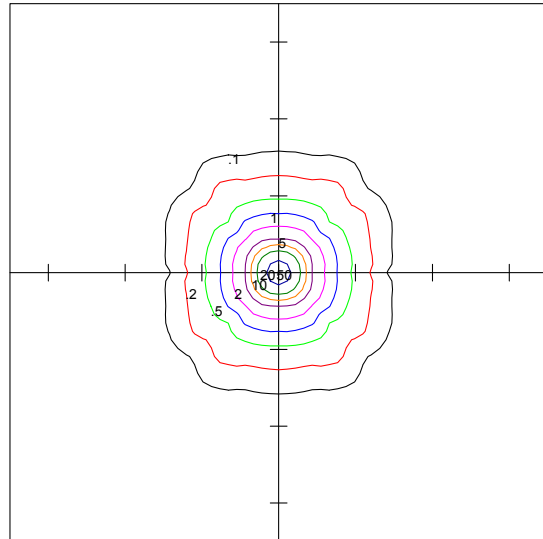
T3 Optics
Lumens: **39663**

Maximum Calculated
Value: **17.83 Fc**



T5 Optics
Lumens: **35963**

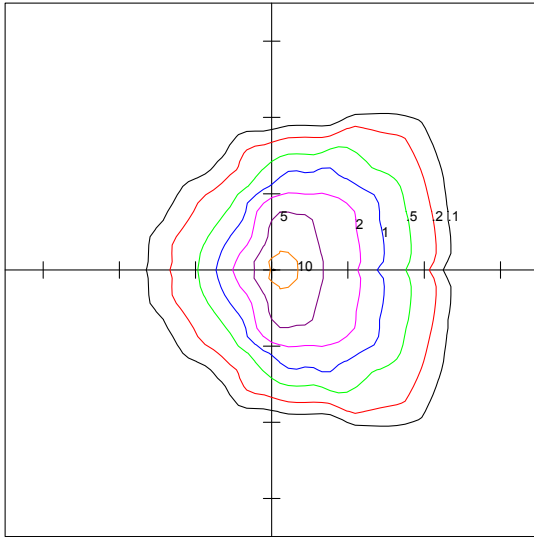
Maximum Calculated
Value: **4.33 Fc**



40° Optics
Lumens: **40556**

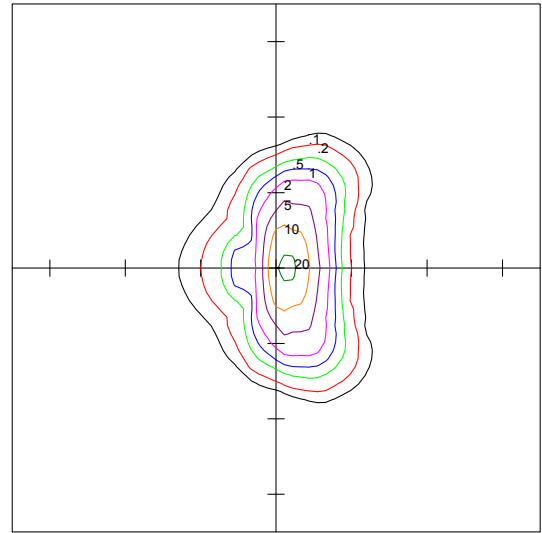
Maximum Calculated
Value: **83.43 Fc**

D826 LED 320 W @ 24 FT



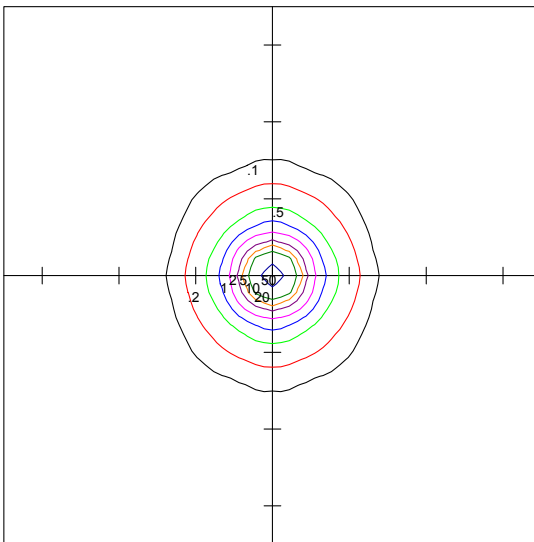
T4 Optics
Lumens: **40158**

Maximum Calculated
Value: **12.42 Fc**



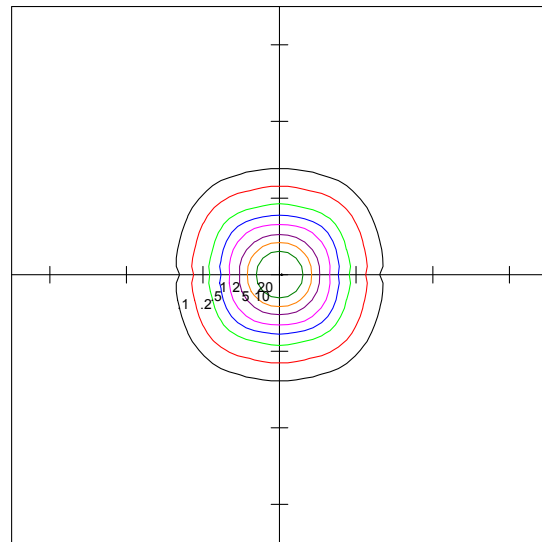
T4A Optics
Lumens: **35915**

Maximum Calculated
Value: **21.96 Fc**



55° Optics
Lumens: **38536**

Maximum Calculated
Value: **76.65 Fc**



70° Optics
Lumens: **40721**

Maximum Calculated
Value: **48.55 Fc**

CONTROLS

Deco Control Solutions

DECO Lighting has teamed up with several industry-leading lighting controls partners to offer unprecedented levels of control and energy-savings in the Gladetino LED area lighting system.

Controls

- Daylight-Sensing Photocontrol
- Motion Sensing
- Bi-Level Dimming and Motion Control
- Wireless Smart Lighting Control

Potential Applications

- University and College Campuses
- Hospitals
- Offices
- Retail outlets
- Car dealerships
- Airports
- Open air parking lots
- Indoor parking garages



COLOR FINISHES

STANDARD



BRONZE



WHITE



BLACK



SILVER

CUSTOM

Custom colors are made to order and will have a cost adder applied.



RED



BLUE



ORANGE



BROWN



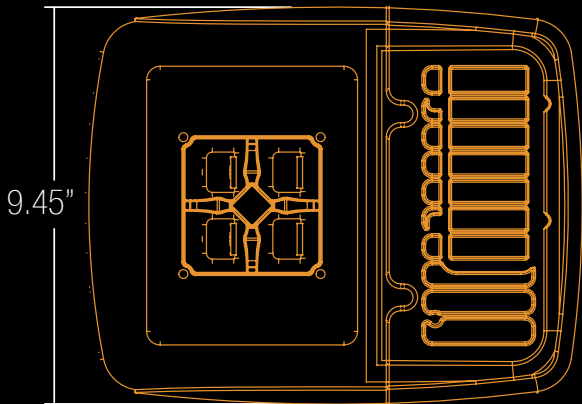
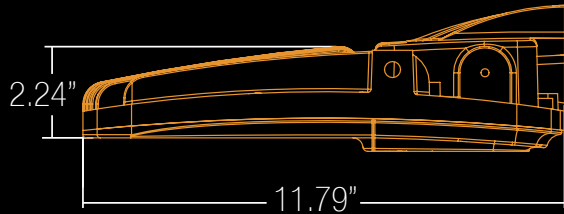
GREEN



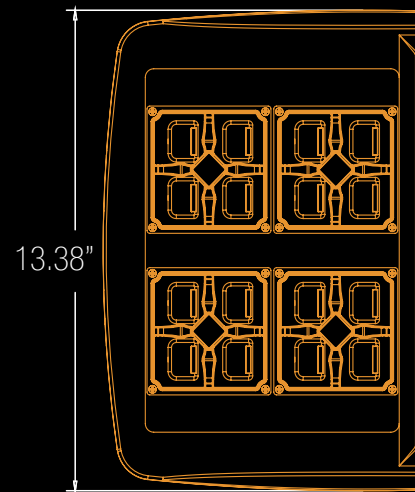
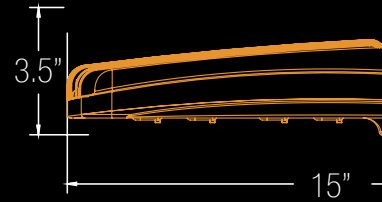
GRAY

LINE DRAWINGS

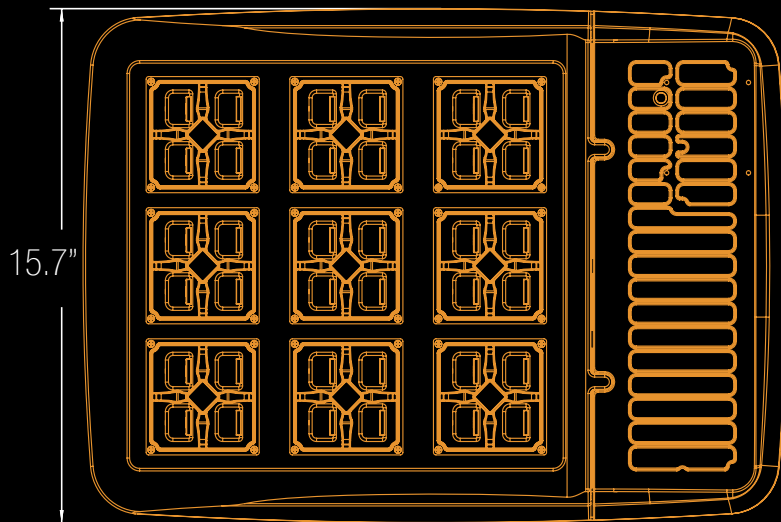
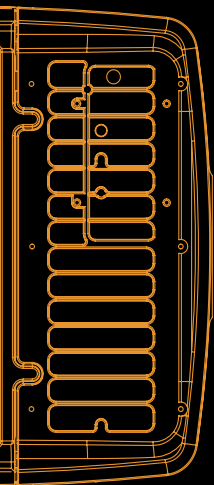
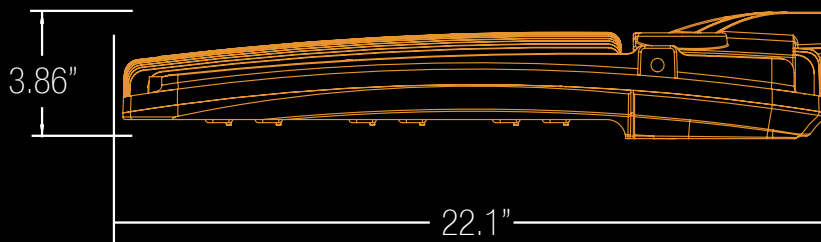
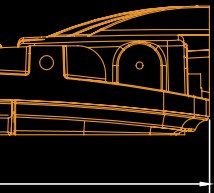
D819-LP



D824-LP



D826-LP



ORDERING INFO

Series	Wattage Lumens	Color Temp.	Voltage	Body
D819-LP Mini Gladetino Area Luminaire	20 22W* 2905 ³	30 3000K	UNV 120-277V	LP Low Profile
	30 28W* 3851 ³	35 3500K		
	40 38W* 4529 ³	40 4000K		
		50 5000K ⁴		

*System wattages are from 5000K test data

D824-LP Gladetino Area Luminaire	20 22W* 3121 ³	30 3000K	UNV 120-277V	LP Low Profile
	30 28W* 3986 ³	35 3500K		
	40 38W* 5203 ³	40 4000K	480 480V ⁶	
	60 56W* 7621 ³	50 5000K ⁴		
	80 75W* 10041 ^{3,7}			
	100 104W* 14131 ³			
	120 113W* 15383 ^{3,7}			
150 149W* 17934 ^{3,7}				

*System wattages are from 5000K test data

D826-LP Large Gladetino Area Luminaire	160 151W* 20975 ^{3,7}	30 3000K	UNV 120-277V	LP Low Profile
	180 169W* 23718 ^{3,7}	35 3500K		
	200 186W* 26522 ^{3,7}	40 4000K	480 480V	
	240 222W* 32311 ^{3,7}	50 5000K ⁴		
	260 244W* 34454 ^{3,7}			
	280 266W* 36394 ^{3,7}			
	320 311W* 39664 ^{3,7}			

*System wattages are from 5000K test data

¹ Standard for fixture
² Contact factory for custom finish

³ Delivered Lumens (T3 5000K)
⁴ Standard Color Temp.

⁵ 20ft mounting height lens standard. Contact factory for higher mounting.
⁶ 480V option only available on models 60W and higher.

⁷ DLC listed wattages
^{*} Not all configurations are DLC listed, refer to the DLC qualified products list

FORMATION

Optics

T2	Type II
T3	Type III
T4	Type IV
T4A	Front Row
T5	Type V
40	40° Narrow Flood
55	55° Medium Flood
70	70° Wide Flood

Mounting

PM	Pole Mount
WB	Wall Bracket
RPMA	Round Pole Mount Adapter
LYM	Large Yoke Mount
YM	Yoke Mount
SF	Slip Fitter
PMA	Pole Mounting Arm Adapter 2-3/8

Finish

BZ	Bronze ¹
BL	Black
WH	White
SL	Silver
CU	Custom ²

Option

PC	Photocell (Twist Lock)
MS	Motion Sensor (with Dimming) ⁵
SP	Surge Protection
95	95 CRI
GS	Glare Shield / House Side Shield
7P	NEMA 7-Pin Receptacle
7R	NEMA 7-Pin Receptacle & Photocell

T2	Type II
T3	Type III
T4	Type IV
T4A	Front Row
T5	Type V
40	40° Narrow Flood
55	55° Medium Flood
70	70° Wide Flood

PM	Pole Mount
WB	Wall Bracket
RPMA	Round Pole Mount Adapter
LYM	Large Yoke Mount
YM	Yoke Mount
SF	Slip Fitter
PMA	Pole Mounting Arm Adapter 2-3/8

BZ	Bronze ¹
BL	Black
WH	White
SL	Silver
CU	Custom ²

PC	Photocell
MS	Motion Sensor (with Dimming) ⁵
SP	Surge Protection
95	95 CRI
GS	Glare Shield / House Side Shield
7P	NEMA 7-Pin Receptacle
7R	NEMA 7-Pin Receptacle & Photocell

T2	Type II
T3	Type III
T4	Type IV
T4A	Front Row
T5	Type V
40	40° Narrow Flood
55	55° Medium Flood
70	70° Wide Flood

PM	Pole Mount
WM	Wall Mount
RPMA	Round Pole Mount Adapter
LYM	Large Yoke Mount
YM	Yoke Mount
SF	Slip Fitter
PMA	Pole Mounting Arm Adapter 2-3/8

BZ	Bronze ¹
BL	Black
WH	White
SL	Silver
CU	Custom ²

PC	Photocell
MS	Motion Sensor (with Dimming) ⁵
SP	Surge Protection
95	95 CRI
GS	Glare Shield / House Side Shield
7P	NEMA 7-Pin Receptacle
7R	NEMA 7-Pin Receptacle & Photocell

st to view models currently listed.

DECO Lighting Inc.
2917 Vail Ave.
Commerce, CA 90040

info@getdeco.com
www.gladetino.com